



**Falcon**  
fine

01752 600640

## **Manadon Cottage**

Manadon, Plymouth, PL5 3UY

Guide Price £800,000 - £850,000





## In Brief

**A stunning DETACHED period property with immense character, parking and GARDENS**

**Reception Rooms** Fabulous 42ft sitting room / living room plus separate dining room.

**Bedrooms** 4 double bedrooms plus two en-suites.

**Heating** Gas central heating

**Area** 2318 Sq Ft

**Tenure** Freehold

**Parking** Driveway parking for numerous cars

**Council Tax** F

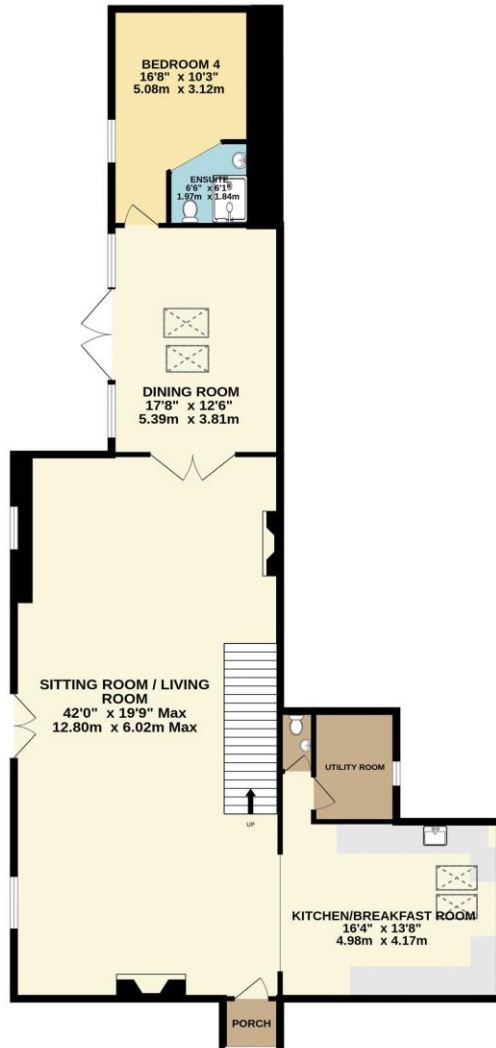
## Description

This magnificent 4 double bedroomed detached property is located in what would have been the grounds to Manadon House, allegedly one of the oldest houses in the Plymouth Area, and was originally part of the Naval College and possibly built as the Chapel to the main house around 1680. The property is tucked away in an incredibly convenient spot close to Derriford hospital and a short drive to Plymouth's City Center. The property itself, steeped in history, has been sympathetically and stylishly converted with a wealth of original features such as the beautiful 'chapel' arched windows. The main Manadon House was, until 1995, the official residence of the Captain of the Royal Naval Engineering College (HMS Thunderer) which together with 100 acres and associated buildings had been a training college for R.N. engineer officers since the 1950's. The site was subsequently sold off for residential development and Manadon House together with the Chapel and Stables were ring-fenced by the Plymouth City Council to protect its delightful setting and historic significance. The front door opens into the fabulous hugely spacious sitting room / living room which measures approx. 42ft x 19'9ft with the focus one end on a gorgeous open fire and a chapel arched window. The flooring is oak and there are grand double doors that open into the separate dining room which has a 'wall of glass' effect along one side with doors into the garden. Beyond the dining room is a sunny double bedroom with en-suite shower room. The kitchen / breakfast room which opens off the living space is simply gorgeous and so well fitted with a stylish range of units with granite work tops and Travertine floor tiles. There is a utility and a downstairs w/c. Off the first-floor landing there are three further double bedrooms with the main bedroom having an en-suite shower room. The family bathroom is stunning with both a walk-in shower and a freestanding bath. The property has gas central heating from two boilers in the utility room. To the rear and side of the property you will find the gardens. There is a fabulous patio seating area with a great feeling of privacy being walled in with some beautiful trees offering some welcome shade on a sunny day. This is clearly a perfect entertainment area, great for social gatherings and alfresco dining! Steps lead up to the the main garden area which has a wonderful 'park' like feel. It is laid to lawn and enclosed by hedging with some wonderful established trees as focal points. There is parking available for numerous cars in the private parking area / drive immediately in front of the house.

# Floor Plans

GROUND FLOOR  
1509 sq.ft. (140.2 sq.m.) approx.

1ST FLOOR  
809 sq.ft. (75.2 sq.m.) approx.



TOTAL FLOOR AREA : 2318 sq.ft. (215.3 sq.m.) approx.

Made with Metropix ©2024



Fixed Price Conveyancing

A complete solution from just £600 with No sale – No Fee



We have not tested any apparatus, equipment, fixtures and fittings or services and so cannot verify that they are connected, in working order or fit for the purpose. Neither have we had sight of the legal documents to verify the Freehold or Leasehold status of any property; or sight of any consents, including Planning Permissions, building Regulations and Breaches of Covenants that may be required for alterations to the property. A buyer is advised to obtain verification from their Solicitor and/or Surveyor. Items shown in photographs are NOT included unless specifically mentioned within the Sales Particulars. Any floor plans on these details are not drawn to scale and are intended for guidance only

Falcon Property is an Introducer to Bradleys Financial Management Ltd. They are appointed representatives of Sesame Ltd who are authorised and regulated by the Financial Services Authority. Bradleys do not charge for mortgage advice, however a fee paying option is available. Typical fee is £195. Bradleys Financial Management: 16 Mannamead Road, Mutley, Plymouth, PL4 7AA

**Your home may be repossessed if you do not keep up repayments on your mortgage.**

[www.falconproperty.com](http://www.falconproperty.com)

8 Mannamead Road Mutley Plymouth PL4 7AA

Email: [sales@falconproperty.com](mailto:sales@falconproperty.com)

